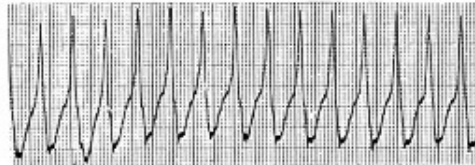


TROUBLES DU RYTHME CARDIAQUE

153



Dr Philippe GRAVELINE SAMU/ CESU 83

IFSI La Garde - EIDE 3^e année

Promotion 2006 - 2009

Mardi 18 Novembre 2008

OBJECTIF :

**APPRENDRE A RECONNAITRE LA
PLUPART DES ARYTHMIES**

A PARTIR DU SCOPE

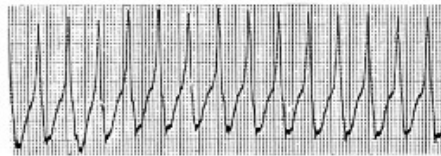
153



4 CRITERES A EVALUER :

- FREQUENCE**
- REGULARITE**
- LARGEUR QRS**
- ONDE P / QRS**

153

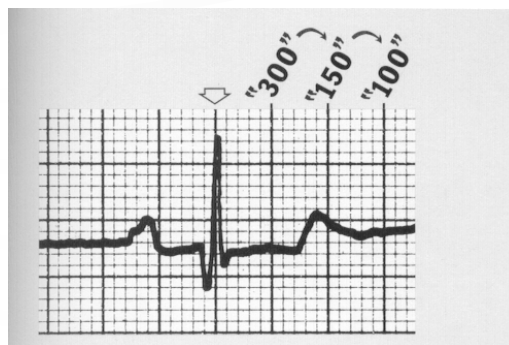
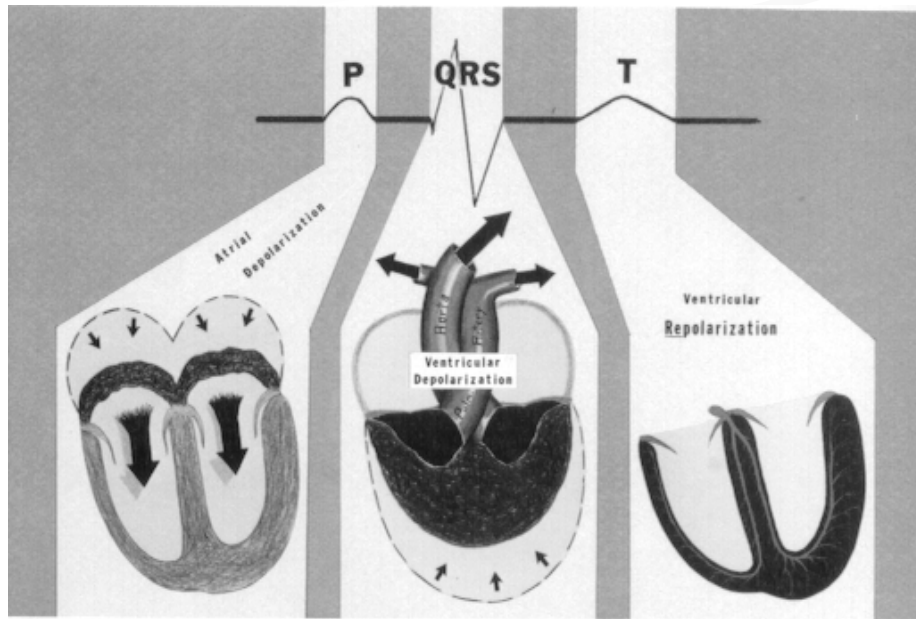


**EVALUATION DU PATIENT ET DU
TRACE +++**

ON NE SOIGNE PAS UN TRACE ++

PATIENT STABLE OU INSTABLE ?

- HYPOTENSION**
- DOULEUR THORACIQUE**
 - OAP**
- TROUBLES CONSCIENCE**
 - DYSPNEE**



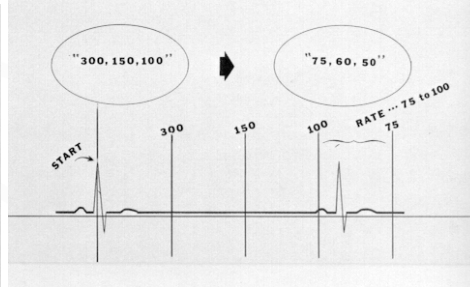
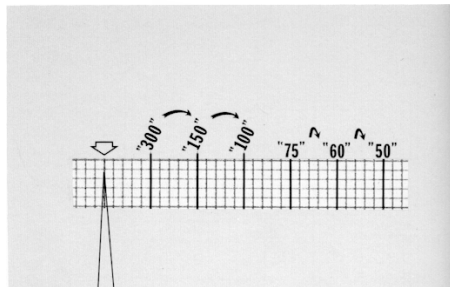
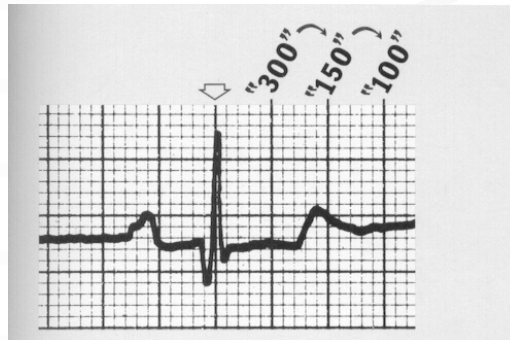
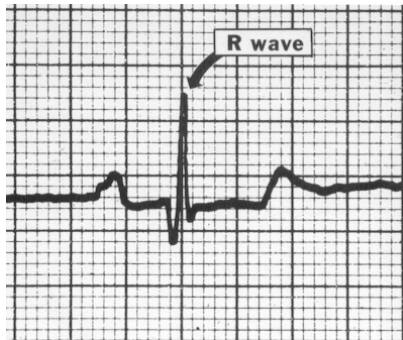
Gros carreau = 0.2 Seconde

Petit carreau = 0.04 Seconde

5 gros carreaux = 1 Seconde

Intervalle PR < 0.2 Seconde

Largeur QRS < 0.12 Seconde



71



Tracé normal

115

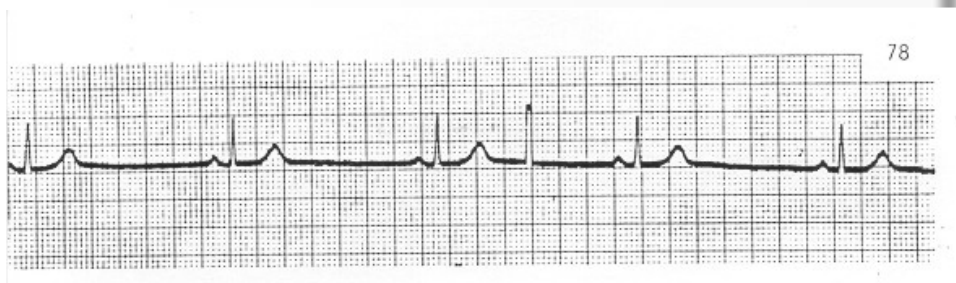


Tachycardie sinusale

232



Tachycardie sinusale



Bradycardie sinusale



Extrasystole ventriculaire



Bigéminisme ventriculaire



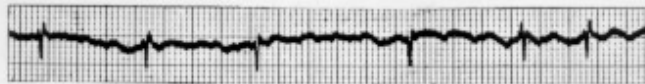
Bigéminisme ventriculaire

59



Trigéminisme ventriculaire

162



Fibrillation auriculaire

140



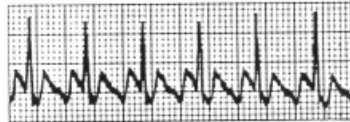
Fibrillation auriculaire

197



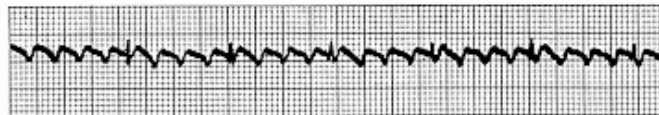
Fibrillation auriculaire

161

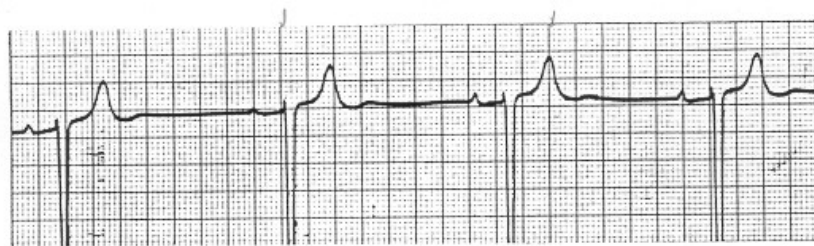
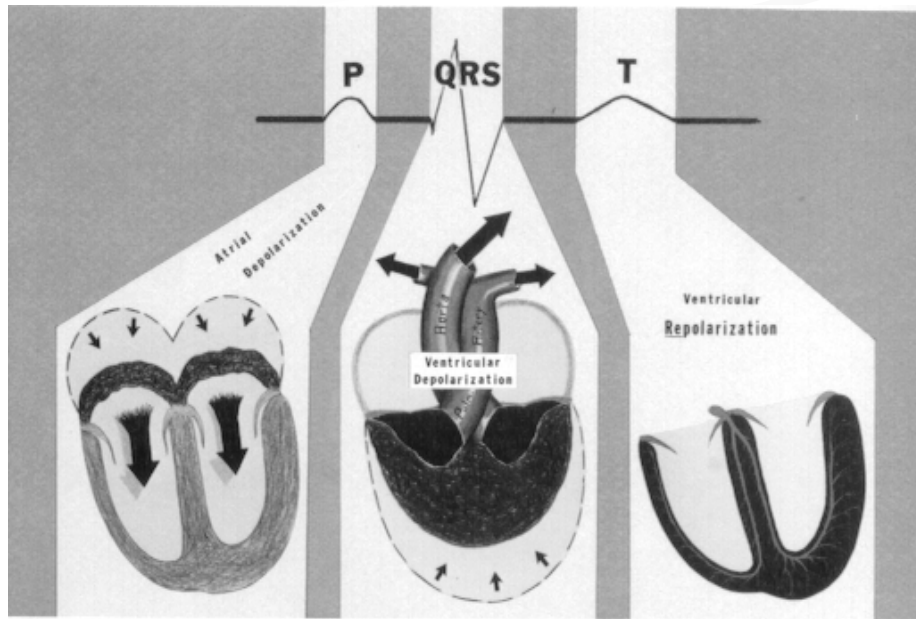


Flutter auriculaire Bloc A-V 2:1

160



Flutter auriculaire Bloc A-V 4:1



234

Bradycardie sinusale Bloc AV 1°

228



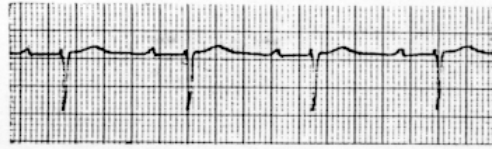
Bradycardie sinusale Bloc AV 1°

102



BAV 1°

238



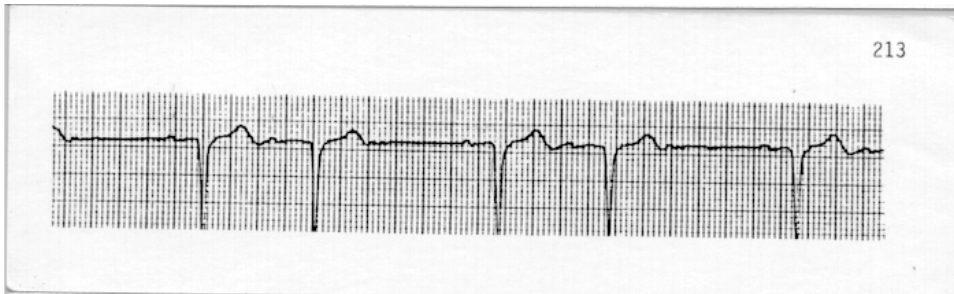
BAV 1°

135



BAV 2°

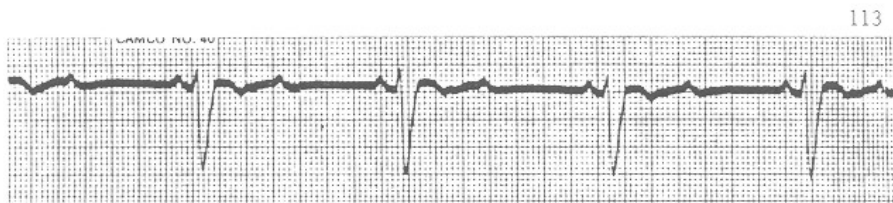
Mobitz I (Wenckebach)



BAV 2°
Mobitz I (Wenckebach)

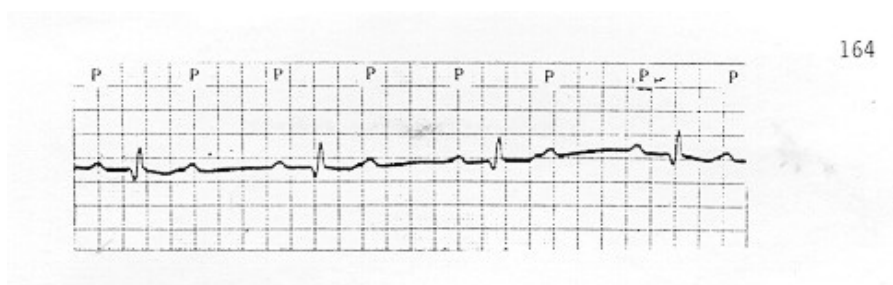


BAV 2°
Mobitz I (Wenckebach)



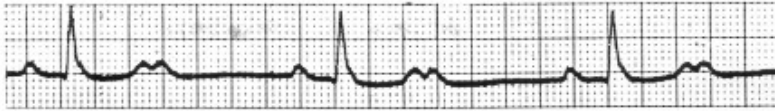
BAV 2° (2:1)

Mobitz II



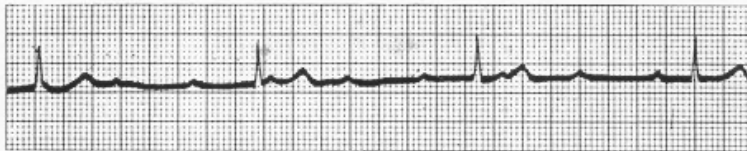
BAV 2° (2:1)

Mobitz II



BAV 2° (2:1)

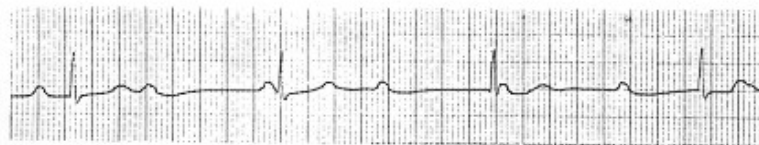
Mobitz II



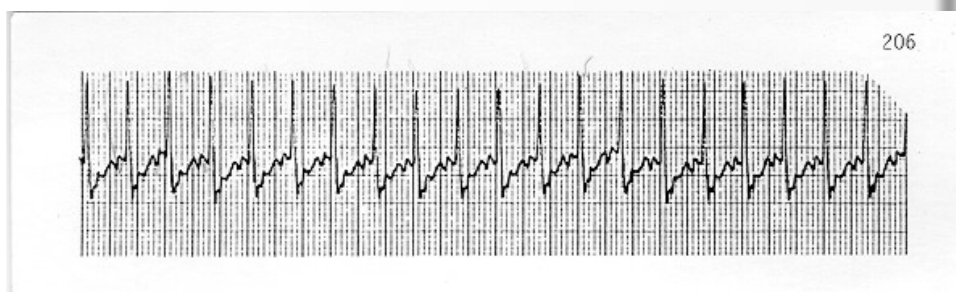
BAV 3°



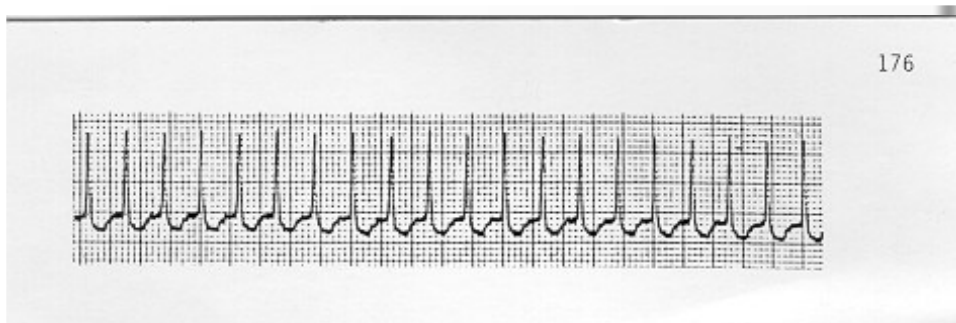
BAV 3°



BAV 3°

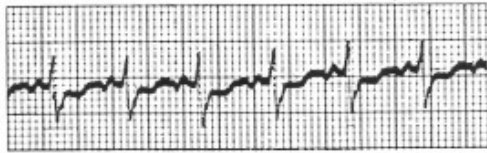


Tachycardie supraventriculaire



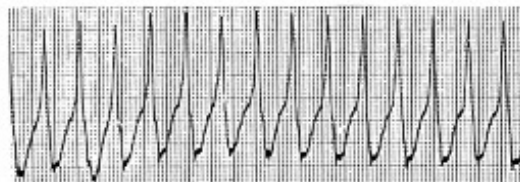
Tachycardie supraventriculaire

114



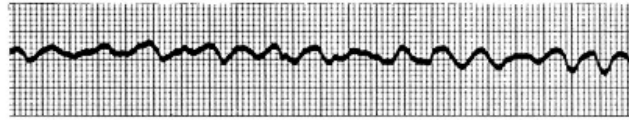
Tachycardie supraventriculaire

153



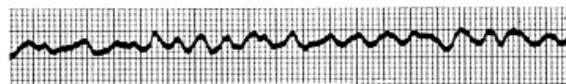
Tachycardie ventriculaire

147

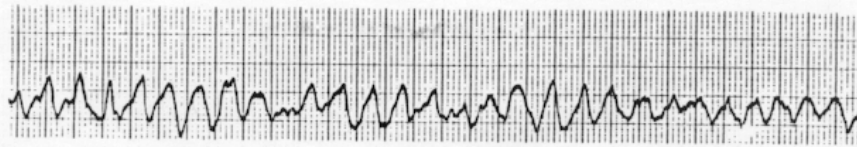


Fibrillation ventriculaire

150



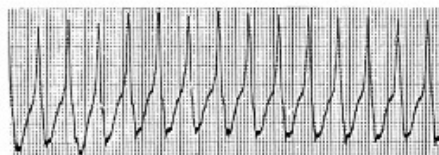
Fibrillation ventriculaire



Fibrillation ventriculaire

4 CRITERES A EVALUER :

- FREQUENCE**
- REGULARITE**
- LARGEUR QRS**
- ONDE P / QRS**



**EVALUATION DU PATIENT ET DU
TRACE +++**

ON NE SOIGNE PAS UN TRACE ++

PATIENT STABLE OU INSTABLE ?

- HYPOTENSION

- DOULEUR THORACIQUE

- OAP

-TROUBLES CONSCIENCE

- DYSPNEE

QUESTIONS ?