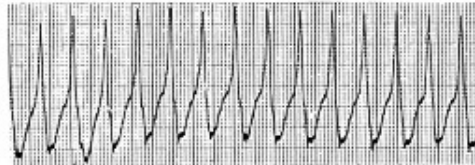


# TROUBLES DU RYTHME CARDIAQUE

153



**Dr Philippe GRAVELINE SAMU/ CESU 83**

**IFSI La Garde - EIDE 3<sup>e</sup> année**

**Promotion 2006 - 2009**

**Mardi 18 Novembre 2008**

**OBJECTIF :**

**APPRENDRE A RECONNAITRE LA  
PLUPART DES ARYTHMIES**

**A PARTIR DU SCOPE**

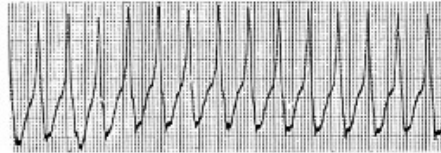
153



**4 CRITERES A EVALUER :**

- FREQUENCE
- REGULARITE
- LARGEUR QRS
- ONDE P / QRS

153

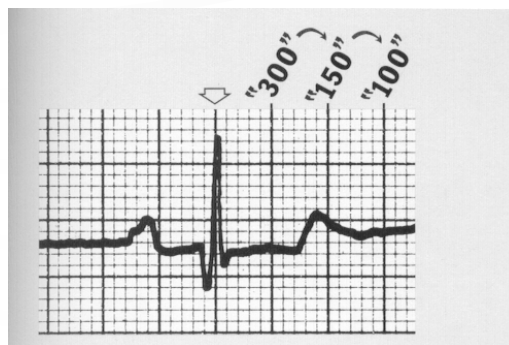
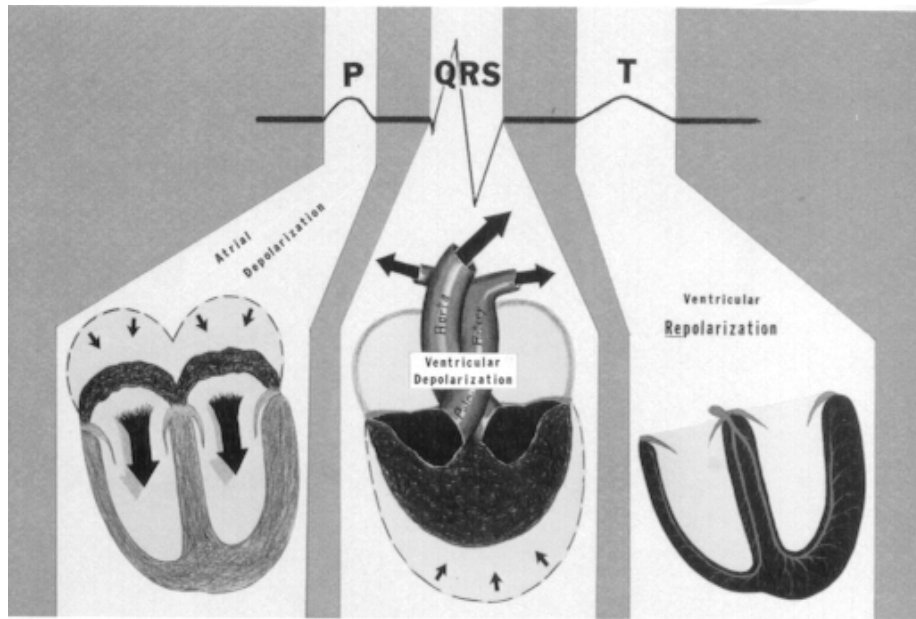


**EVALUATION DU PATIENT ET DU  
TRACE +++**

**ON NE SOIGNE PAS UN TRACE ++**

**PATIENT STABLE OU INSTABLE ?**

- HYPOTENSION
- DOULEUR THORACIQUE
- OAP
- TROUBLES CONSCIENCE
- DYSPNEE



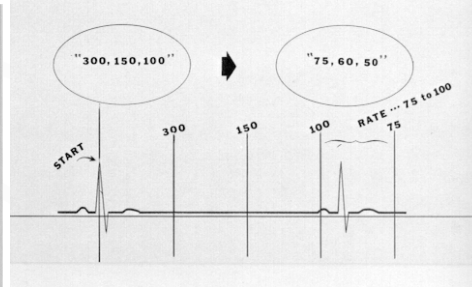
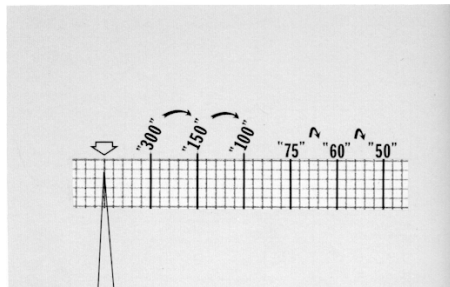
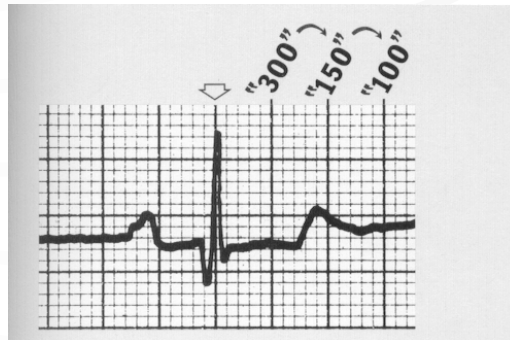
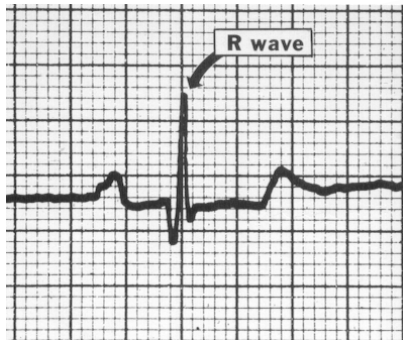
**Gros carreau = 0.2 Seconde**

**Petit carreau = 0.04 Seconde**

**5 gros carreaux = 1 Seconde**

**Intervalle PR < 0.2 Seconde**

**Largeur QRS < 0.12 Seconde**



71



**Tracé normal**

115



**Tachycardie sinusale**

232



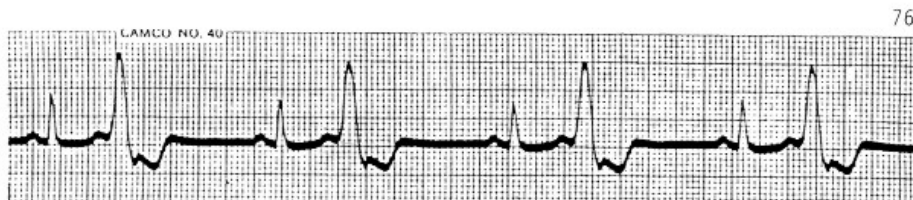
**Tachycardie sinusale**



**Bradycardie sinusale**



**Extrasystole ventriculaire**



## **Bigéminisme ventriculaire**



## **Bigéminisme ventriculaire**

59



## **Trigéminisme ventriculaire**

162



## **Fibrillation auriculaire**

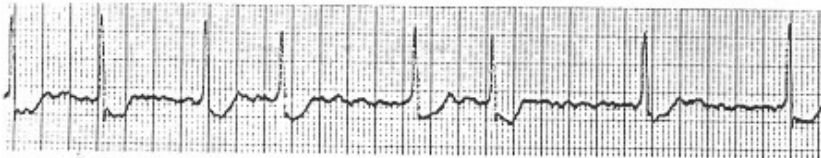


140



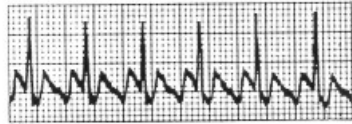
## **Fibrillation auriculaire**

197



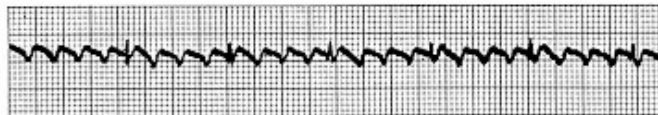
## **Fibrillation auriculaire**

161

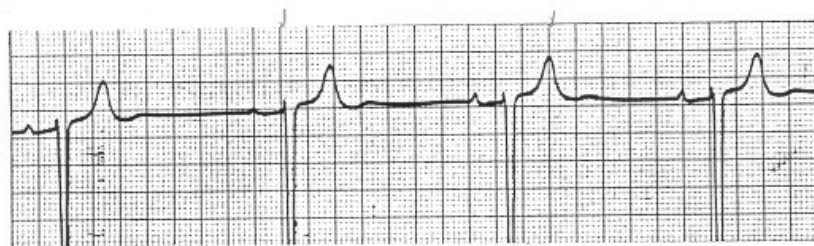
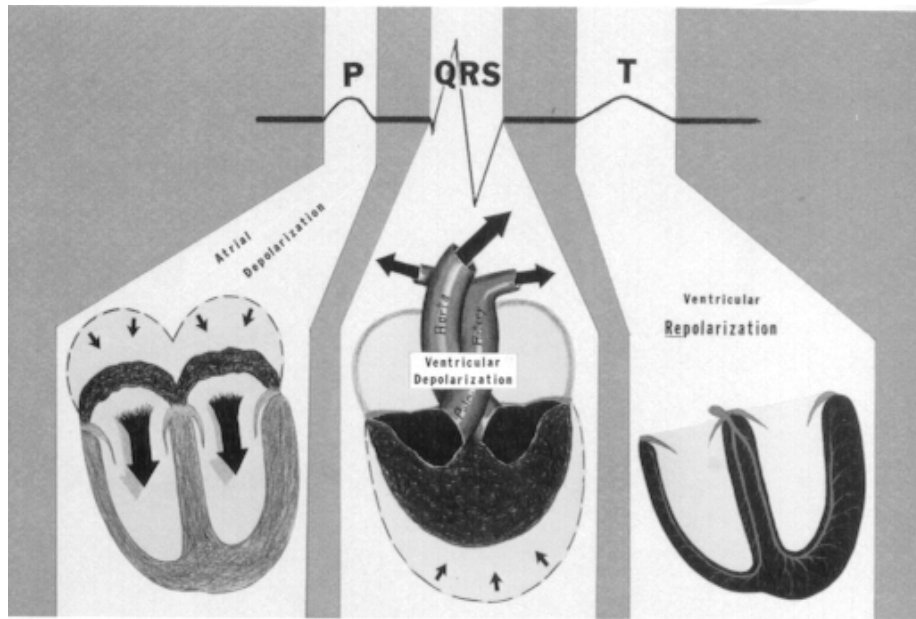


**Flutter auriculaire Bloc A-V 2:1**

160



**Flutter auriculaire Bloc A-V 4:1**



**Bradycardie sinusale Bloc AV 1°**

228



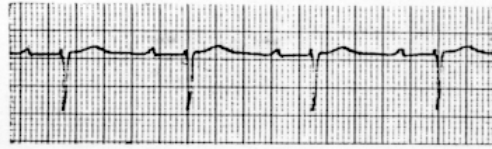
**Bradycardie sinusale Bloc AV 1°**

102



**BAV 1°**

238



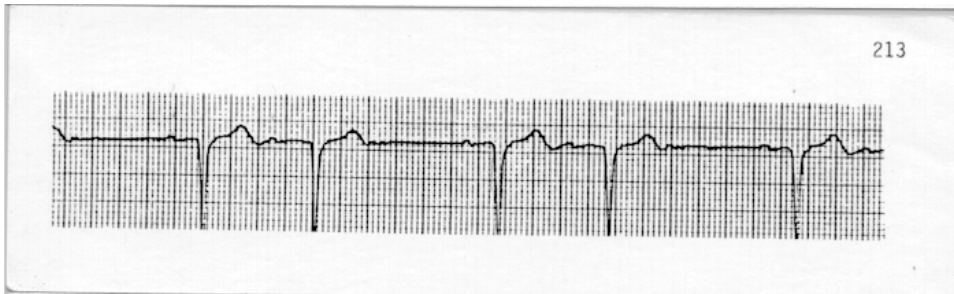
**BAV 1°**

135



**BAV 2°**

**Mobitz I (Wenckebach)**



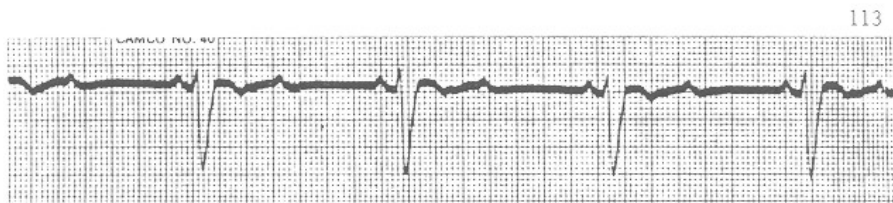
**BAV 2°**

**Mobitz I (Wenckebach)**



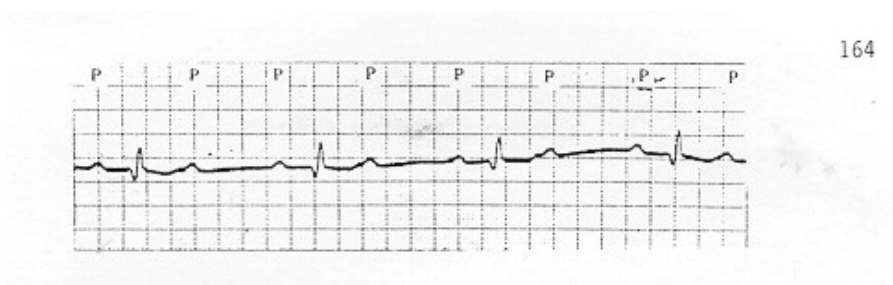
**BAV 2°**

**Mobitz I (Wenckebach)**



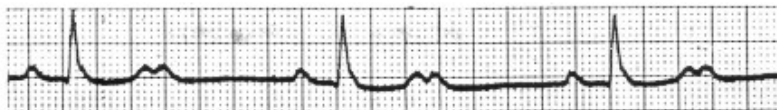
**BAV 2° (2:1)**

**Mobitz II**



**BAV 2° (2:1)**

**Mobitz II**



**BAV 2° (2:1)**

**Mobitz II**



**BAV 3°**

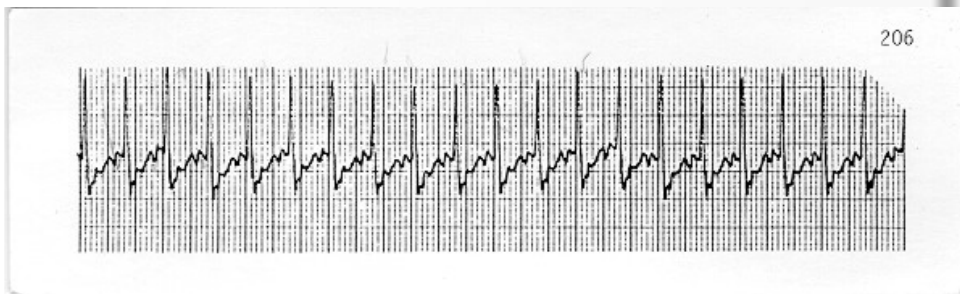




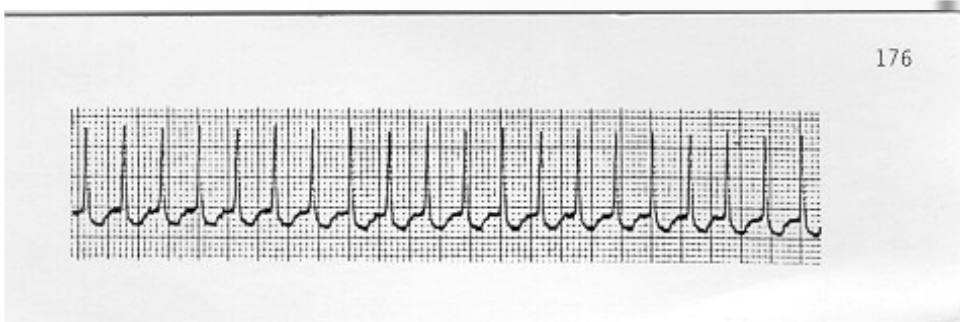
**BAV 3°**



**BAV 3°**

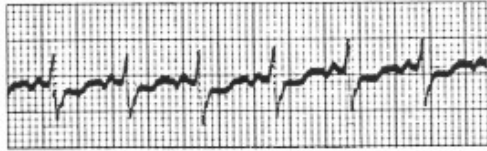


**Tachycardie supraventriculaire**



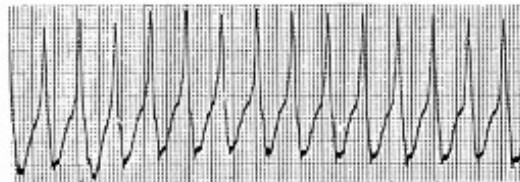
**Tachycardie supraventriculaire**

114



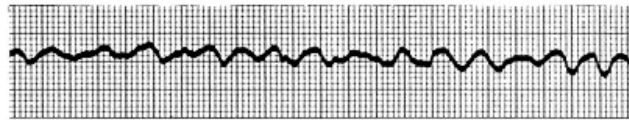
## **Tachycardie supraventriculaire**

153



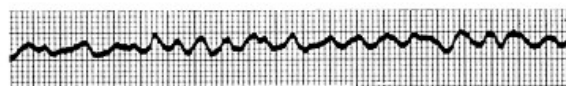
## **Tachycardie ventriculaire**

147

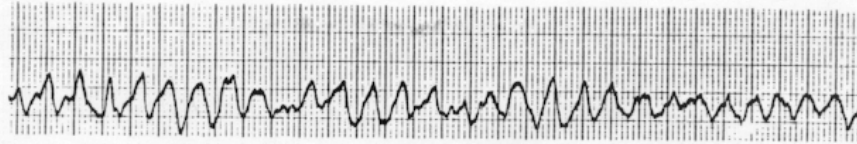


**Fibrillation ventriculaire**

150



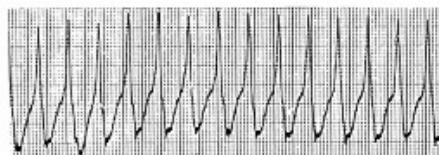
**Fibrillation ventriculaire**



## **Fibrillation ventriculaire**

### **4 CRITERES A EVALUER :**

- FREQUENCE**
- REGULARITE**
- LARGEUR QRS**
- ONDE P / QRS**



**EVALUATION DU PATIENT ET DU  
TRACE +++**

**ON NE SOIGNE PAS UN TRACE ++**

**PATIENT STABLE OU INSTABLE ?**

**- HYPOTENSION**

**- DOULEUR THORACIQUE**

**- OAP**

**-TROUBLES CONSCIENCE**

**- DYSPNEE**

**QUESTIONS ?**